

HYPER-PRO 12 PLUS

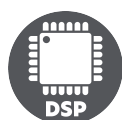
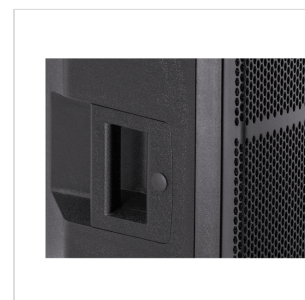
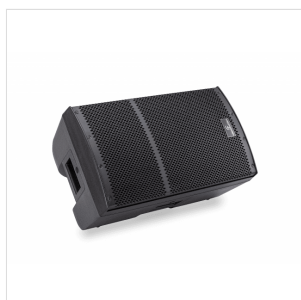
12" 2-WAY ACTIVE LOUDSPEAKER WITH DSP

The new Hyper-Pro Plus speakers represent a new important stage in the evolution of the famous **Hyper series** by Soundsation. The power, audio quality and convenience of the previous models are now integrated with the functions which are essential for those who professionally use a speaker as a work tool.

700W continuous **D-Class** speakers, selected woofers and compression drivers, **DSP** for Crossover control, EQ, **2-Band Limiter**, **phase alignment** and **delay optimization** of woofers and compression drivers. All this technology can ensure high performance and maximum audio quality in any use conditions.

The control panel includes two XLR-Combo Mic/Line inputs, the Mix output and **4 Audio Programs** (Music, Live, Monitor, Vocal) to quickly adapt the speaker to the main uses.

The stylish and sturdy cabinet is designed to be installed vertically on the floor or on a 35mm pole/tripod, and also suspended horizontally or vertically thanks to the 4 M8 fixing points.



PRODUCT DETAILS

KEY FEATURES

2-way Loudspeaker, Bass-Reflex Design

700W Continuous / 1400W Peak Class-D amplifier

90°H x 60°V Coverage

DSP for Crossover, EQ and 2-Band Limiter Control, Phase and Time Optimization

4 EQ Presets (Music, Live, Monitor, Speech)

2 Mic-Line Combo Inputs and Balanced Mix Output

On-off key for the Front LED

35mm Adapter for Pole or Tripod Stand

4 Fixing Points for M8 Eyebolts

SPECIFICATIONS

System Type	2-Way Active 12" Loudspeaker, Bass-Reflex
Power Rating	700W Continuous, 1400W Peak
Frequency Response	45Hz-20kHz
Max SPL	130dB SPL
LF Driver	12" Custom Woofer
HF Driver	1" Compression Driver
Coverage	90°H x 60°V
Crossover Frequency	2.5kHz
Input Connectors	2x Balanced Combo XLR/1/4" Jack Connectors
Output Connectors	1x Balanced XLR Mix Output
Indicators	Power, Clip, Preset, Front Led
EQ	4 Presets (Music, Live, Monitor, Vocal)
DSP	Crossover, EQ, Dual Band Limiters, Phase and LF/HF Time Alignment
Controls	2x Channel Gain, Master Volume, Front Led On/Off, Ground Lift, EQ Preset
AC Power	100-120V~ or 220-240V~ 50/60Hz (User Selectable)
Power Consumption	360W Typical
Cabinet	Polypropylene
Handles	2 on Sides, 1 on Top
Monitor Angle	45°
Finish	Black
Grille	Powder-Coated Steel with Acoustic Foam
Pole-Mount	36mm Pole Socket
Flying Points	4x M8:
Unit Size (WxDxH)	357 x 356 x 610 Mm (14.1" x 14" x 27")
Net Weight	14,4 Kg - 31.7 Lbs.

Carton Size (WxDxH)

440 x 440 x 685 Mm (17.3" x 17.3" x 27")

Packed Weight

16.8Kg - 37 Lbs.