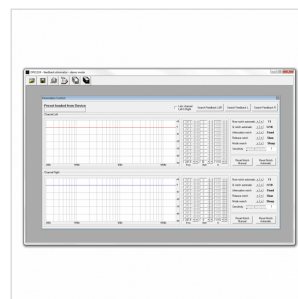


DFE1224

DIGITAL FEEDBACK ELIMINATOR

The DFE-1224 is a feedback detection device that can be used in dual channel or mono mode. The feedback system analyzes all frequencies in the signal path, determines the cause of the Larsen effect and cancels it by implementing the 12 real-time high precision notch filters that have - 45dB attenuation. The system is adjustable in 15 steps, allowing the user to change the DFE-1224 sensitivity to audio feedback according to your situation requirements. The parameter settings of the 12 notch filters per channel remain in RAM memory, but if it is required to keep them as a setting for future reference they must be saved in a user memory preset. If you switch off the DFE-1224 before saving any changed settings to a memory, these will be lost and on power up the unit will default to the last saved memory settings. The unit has 20 memories available, with 4 factory presets and 16 user memory presets. The DFE-1224 has a bypass system that has been designed within the analog domain and the unit can be connected via MIDI as well as USB for external control and two way movements of data.



PRODUCT DETAILS

KEY FEATURES

24 bit Audio Processor with 12 Real-time Notch filters

Professional 24 bit AD/DA Converters

Adjustable parameter for each effect and MIX between input and output signal

User-friendly panel interface thanks to the rotative knob "Navigation" that allows to get all the parameter

Wide LCD screen for an optimal check of the status of the unit

Ultra-rugged construction allowing to use the unit in Live performances

Software manager for remote unit controlling included

SPECIFICATIONS

	24 bit Audio Processor for filters and professional AD/DA converters
Inputs	Balanced XLR-F & Jack
Outputs	Balanced XLR-M & Jack
Converters	AD/DA 24 bit
User Memories	16
Recall Memories	20
S/N Ratio	> 90 dBA
THD+N	< 0.01% @ -6 dBFS
Input Max Level	9 dBu
Output Max Level	9 dBu
Frequency Response	20Hz - 20kHz +/- 0.5dB
LCD Display	Graphic 2x20 characters
Additional outputs	USB, MIDI
Dimension	1U Rack
	Software manager for remote unit controlling included
Weight	3 Kg