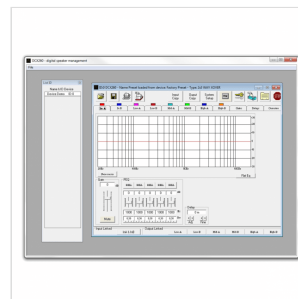


DCX260

2 IN 6 OUT DIGITAL LOUDSPEAKER MANAGEMENT SYSTEM

The DCX260 is a 2 input x 6 output Speaker Processor. The activity of the 2 inputs is displayed by rows of 6 level leds + 1 clip led, the activity of the 4 outputs is displayed by rows of 5 level leds + 1 clip led + 1 Limiter led. The unit has 2 analog inputs, a stereo digital input, and 4 analog outputs. Each input has 5 parametric filters and each output has 7 parametric filters. All the input and output filters can be selected to be Bell or Shelving filters. On the outputs a Hp and a Lp filters up to 24dB/Oct. On Outputs, is available a Limiter working on the RMS value of the limiter's input. The Limiter's THR can range up to -30dBu. Each input and output channels have delays up to 850ms, with steps of 22usec. Linking functions between inputs and linking functions between outputs are available. A function is allowing to have ramps closing the output level on parameter changes, when the unit is used installation time; this function can be excluded when the unit is used live and it is necessary to perform small changes to the set parameter...on the fly. The Pc SW for the remote control is allowing to connect in net up to 32 units.



PRODUCT DETAILS

KEY FEATURES

24 bit Audio Processor for filters and 96 bit for intermediate computation results

5 parametric filters on inputs and 7 on outputs adjustable between Shelving or Bell

X-over HPF & LPF adjustable from -6 dB/Oct (Butterworth) up to -24dB/Oct (Butterworth, Linkwitz or Bessel)

RMS Limiter on Outputs

Digital LED Vu Meters with up to 7 segments on inputs and outputs

Wide LCD screen for an optimal check of the status of the unit

Software manager for remote unit controlling included

SPECIFICATIONS

	24 bit Audio Processor for filters and 96 bit for intermediate computation results
Inputs	Balanced XLR
Outputs	Balanced XLR, TCP-IP
Minimum Load	150 Ohm
User Memories	24
Recall Memories	24
Vu Meters	7 led for Inputs (-20dBu up to +15dBu; Clip)/7 led for Outputs (-20dBu up to +15dBu; Clip; Limit)
THD+N	0.001% a 1kHz 0dBu
S/N Ratio	>110dB
Frequency Response	20Hz – 20kHz ; -0.5dBu at 20Hz and 20kHz
LCD Display	Graphic 2x20 characters
Parametric filters	5 filters on each input assignable as Bell or Shelving / 7 filters on each output assignable as Bell or Shelving
Filter Type	symmetrical Bell or High/Low Shelving up to second order
Filter Gain	Bell and Shelving's gain is ranging from -15dBu up to +15dBu by 0.5dBu resolution steps
Threshold	from 20dBu up to -10dBu
Attack Time	from 5ms up to 200ms (1ms resolution up to 20ms, then 10ms resolution up to 100ms and 20ms resolution up to 200ms)
Release time	from 0.1 sec up to 3 sec (0.1 sec step resolution)
	RMS Limiter on Outputs
	RMS Limiter on Outputs
Dimensions	1 U Rack
Weight	3 kg