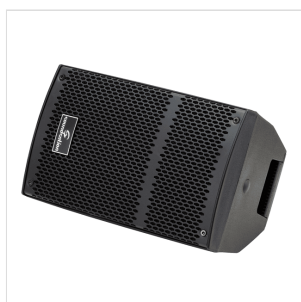


HYPER TOP 6A 200W 6" POLYPROPYLENE ACTIVE SPEAKER

HYPER series is the result of years of experience gathered by Soundsation in Portable Sound systems. This speaker line is built with a sturdy, lightweight and stylish polypropylene enclosure with full metal grille and acoustic foam to protect the transducers. The cutting-edge design, according to latest industry standard, offers both a great look and an optimal sound quality. All models are equipped with a Class D amp and switching power supply to deliver massive power with great efficiency and light weigh. (with the exception of the 6"). MIC and Line inputs to connect all major input sources, being microphones, mixers or media players. Featuring four M8 flying points distributed on each side, 1 handle on top and a standard D36mm pole mount hole it is ideal for both fixed installation or portable applications.



PRODUCT DETAILS

KEY FEATURES

2-Way Active Speaker

High resonance, sturdy and lightweight polypropylene cabinet with full metal grille and foam soundproof material

Class AB 200W amplifier

6" woofer and 1" driver

Microphone/line inputs XLR + jack jack ¼", stereo RCA + stereo mini jack ideal to connect smartphones or tablets

XLR output mix out

Volume and equalization Hi/LOW controls

Suited for stage monitor use at 30°/45°

Top handle for easy carrying

36mm pole mount

4 M8 flying points, one each side

Dimensions (WxHxD): 217 x 367 x 209 mm

Weight: 5,8 Kg

SPECIFICATIONS

	2-Way active speaker
Woofers	6" with 1.2" voice coil
Compression driver	1" voice coil, 1" throat
Horn	90° x 60°, symmetric
Frequency Response [- 10dB]	67Hz - 19KHz
Frequency Response [- 3dB]	72Hz - 19KHz
Max SPL	108dB
Sensitivity	89dB
	Class AB amplifier
Power (Peak/Rated)	200W/100W
Crossover	3.5KHz, 18dB/Oct
EQ	High (2.5KHz, +/- 12 dB); Low (150Hz, +/- 12 dB)
LEDs	Power On (Green), Clip (Red)
Power Requirement	230Vac - 50 Hz
Minimum Power Consumption	60W
Power Connector	VDE with T1A-250V Fuse
Dimensions (WxHxD)	217 x 367 x 209 mm
Weight	5,8 Kg